

PROMOTIONAL PRICING !!
UP TO 20,000 SF AVAILABLE



NORTH PORT MEDICAL PLAZA

Bobcat Village

2345 Bobcat Village Center Road North Port, Florida 34288

- ★ North Port's only Class "A" medical facility anchored by Sarasota Memorial Hospital's free-standing emergency room
- ★ Design your office with a generous tenant improvement allowance
- ★ Centrally located on Toledo Blade Boulevard, just south of Price Boulevard with easy access to I-75 and US 41
- ★ Abundant parking
- ★ Full-Service **Emergency Care Center**
 - Staffed 24/7 by Sarasota Memorial's Emergency Medicine Physicians
 - State-of-the-Art Treatment Rooms
 - 23-Hour Observation Unit
- ★ Outpatient Services
 - 24/7 Laboratory and Radiology
 - Rehabilitation Services
 - Home Health Care



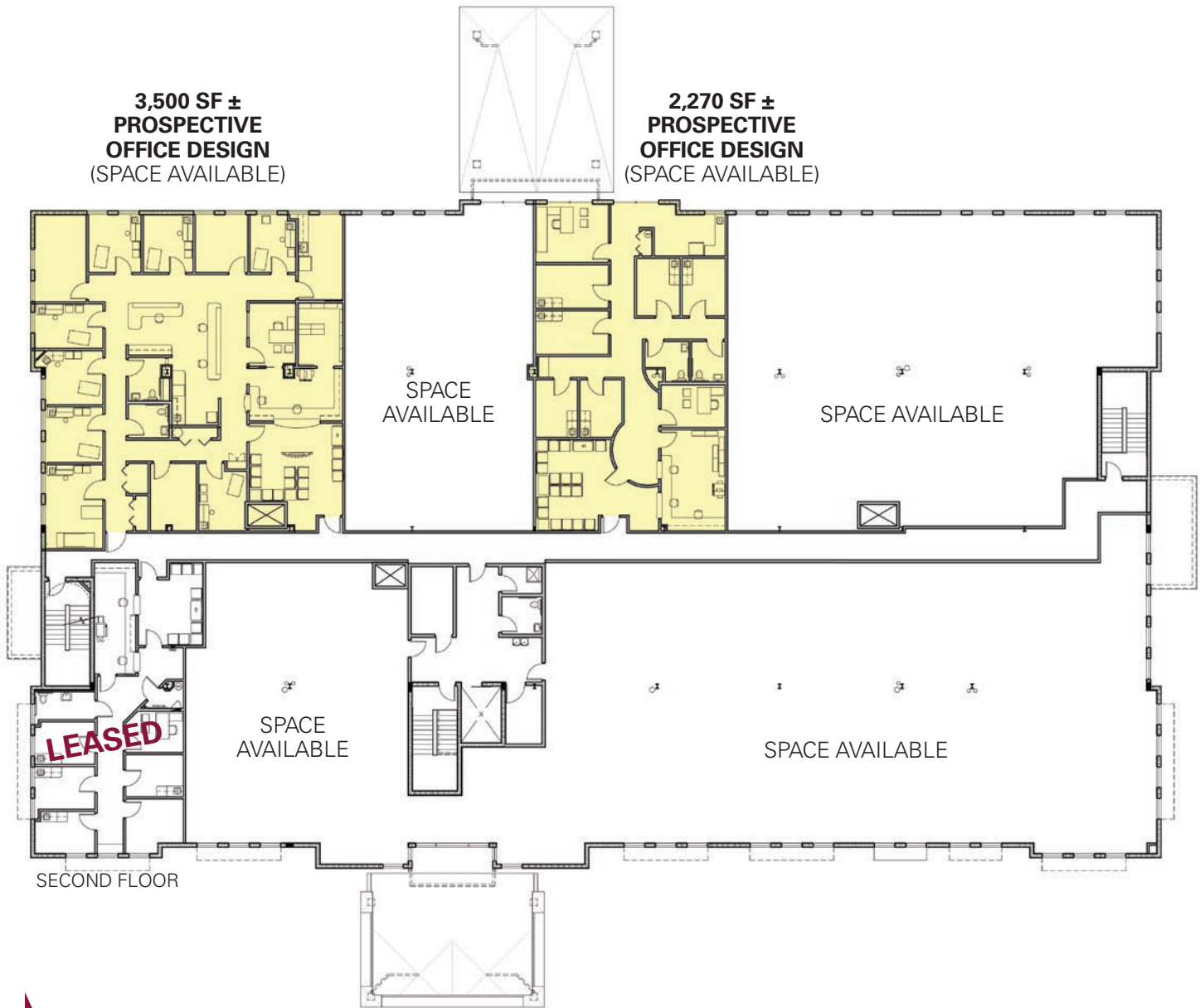
(941) 378-1740

www.starling-group.com

5969 CattleRidge Boulevard, Suite 200 Sarasota, FL 34232

No warranty of representation, expressed or implied, is made to the accuracy of information contained herein, and same is submitted subject to errors, change of price, rental or other conditions, withdrawal without notice, and to any special listing conditions, imposed by our principals.

CUSTOM DESIGNED FLOOR PLANS TO SUIT YOUR NEEDS



LEASE OPTION

LEASE RATE: Call for Special Rates and Incentives!

TENANT FINISH ALLOWANCE: \$50 per square foot from shell condition.

PURCHASE OPTION

PURCHASE: \$225 per square foot, shell condition